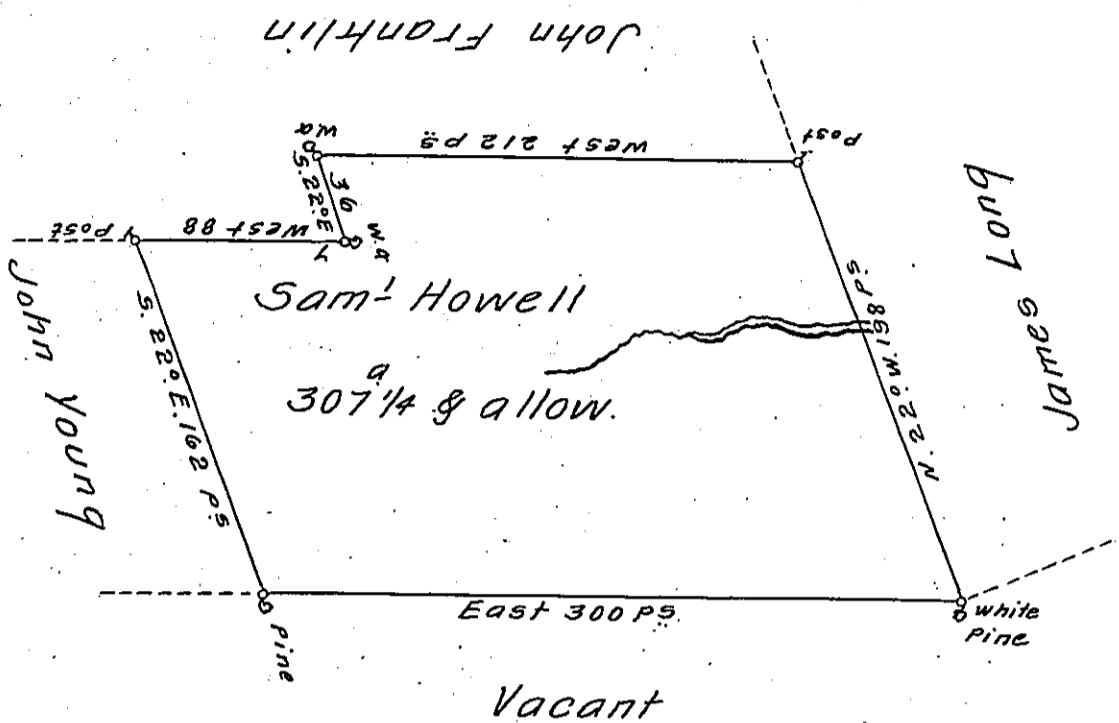


✓



A Draught of a Tract of Land called— Situate On the South-
 erly side of the North East Branch of Susquehanna River
 adjoin. g land Surveyed to James Long in the County of North-
 umberland. containing three hundred & Seven Acres and a
 Quarter of an Acre besides The usual allowance of 6th Cent for
 Roads &^{to} Surveyed the 12th day of April 1774 for Samuel How-
 ell In Pursuance of a Warrant Dated the 28th day of January
 1774.

by

To

Cha^s Stewart D^y Sur^r

John Lukens Esq^r Survey^r Gen^l

IN TESTIMONY that the above is a copy of the original remaining on file in
 the Department of Internal Affairs of Pennsylvania, made
 conformably to an Act of Assembly approved the 16th day of
 February, 1833, I have hereunto set my Hand and caused
 the Seal of said Department to be affixed at Harrisburg,
 this eighth day of May 1911.

Henry Howell
 Secretary of Internal Affairs.